

Warping & Blending AP

Operation about AP

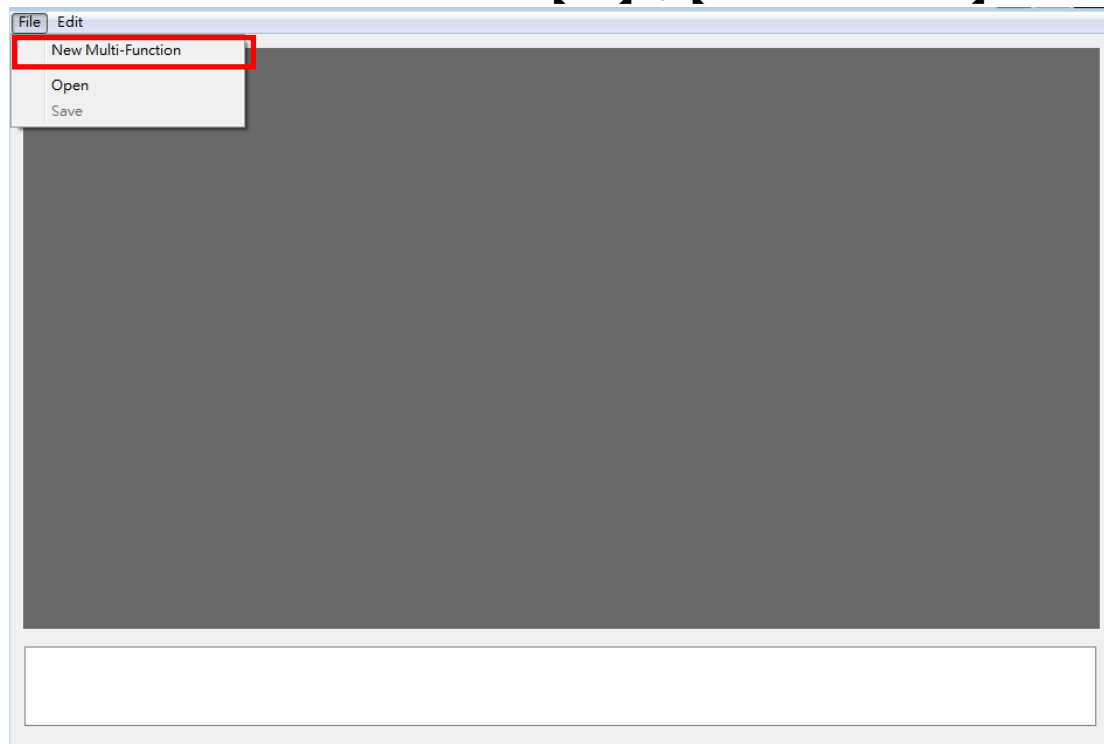
This AP provides two major functions including Warp and Edge Blending.

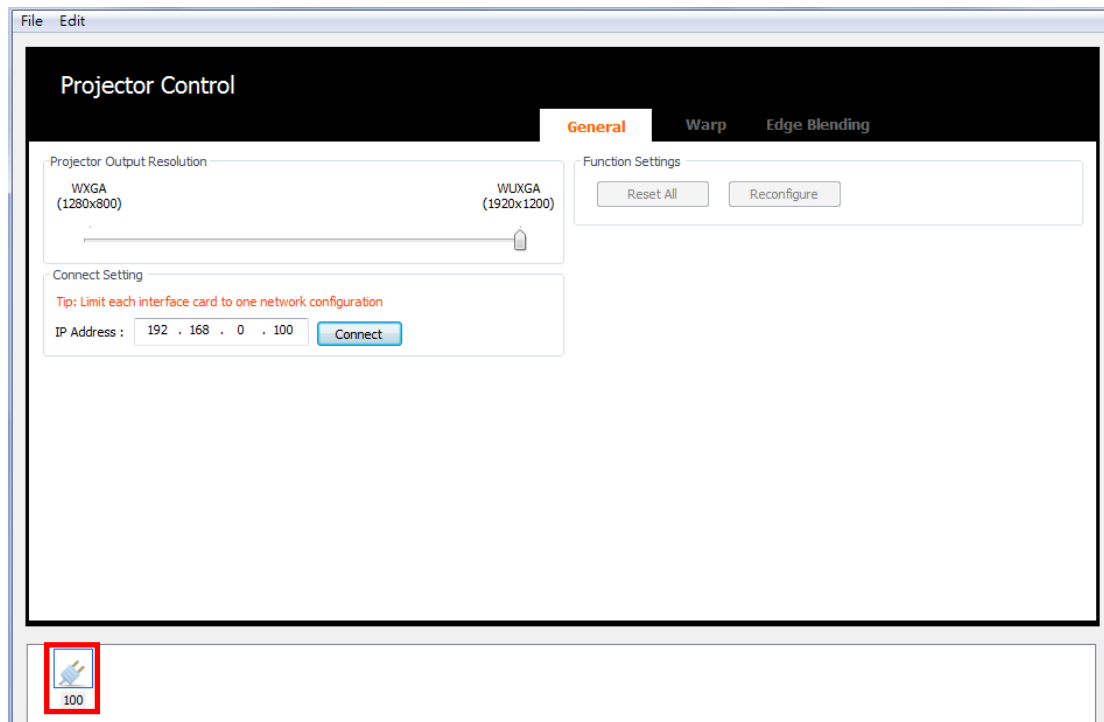
✂ If the projector was closed, please reopen the AP again to continue adjust.





New Multi-Function

This function makes user able to operate a single projector.

You can enable this function in the menu **【File】** → **【New Multi-Function】** .





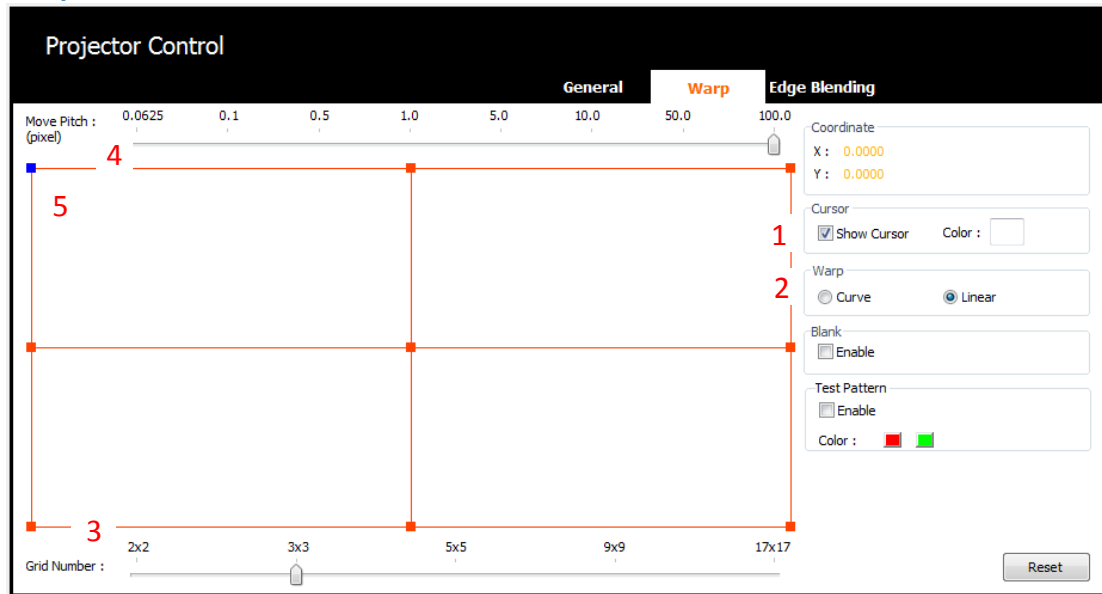
- Icon that indicating disconnection: 
- Icon that indicating connection: 
- Icon that indicating sleep: 
- Selected channel will be in a blue box: 
- Press "Ctrl + Shift + Delete" on the keyboard to delete the selected channel

General

The screenshot shows the 'Projector Control' application window. At the top, there is a black header bar with the title 'Projector Control' in white. Below the header, there are three tabs: 'General' (highlighted in orange), 'Warp', and 'Edge Blending'. The 'General' tab contains two main sections. The first section, 'Projector Output Resolution', features a horizontal slider. The left end of the slider is labeled 'WXGA (1280x800)' and the right end is labeled 'WUXGA (1920x1200)'. The slider handle is positioned near the right end. The second section, 'Connect Setting', includes a red tip: 'Tip: Limit each interface card to one network configuration'. Below the tip, there is an 'IP Address' field with the value '192 . 168 . 0 . 100' and a blue 'Connect' button. To the right of the 'Projector Output Resolution' section, there is a 'Function Settings' box containing two buttons: 'Reset All' and 'Reconfigure'.

1. Change to projector output resolution
 2. Edit IP address and connect with projector
- ✂ Click on “Reset All” to apply default settings to projector
Click on “Reconfigure” to apply the current AP settings to projector

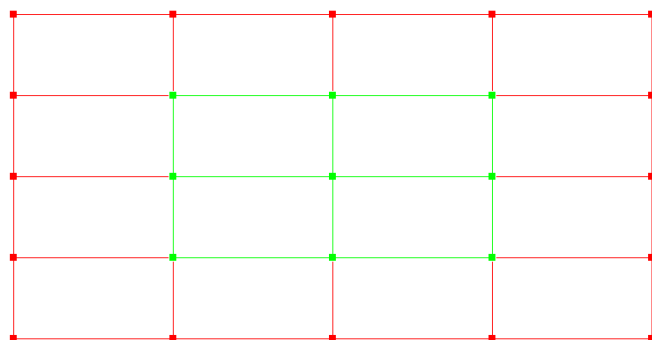
Warp



1. Change cursor color
Right click on the **【Color】** to change the cursor color
2. Select Warp type
3. Adjust the Grid Number
Use **【Ctrl】** and **【+】**, **【Ctrl】** and **【-】** on the key board or simply use mouse to increase/decrease the grid number, and to increase/decrease the cursor number at the same time.
4. Adjust the Move Pitch, use **【+】** and **【-】** on the key board or simply use mouse.
5. Select Cursor, use **【W】**, **【A】**, **【S】**, **【D】** on the key board or simply use mouse. The selected cursor will be change into blue color.
6. Move cursor, use **【↑】**, **【↓】**, **【←】**, **【→】** on the key board.

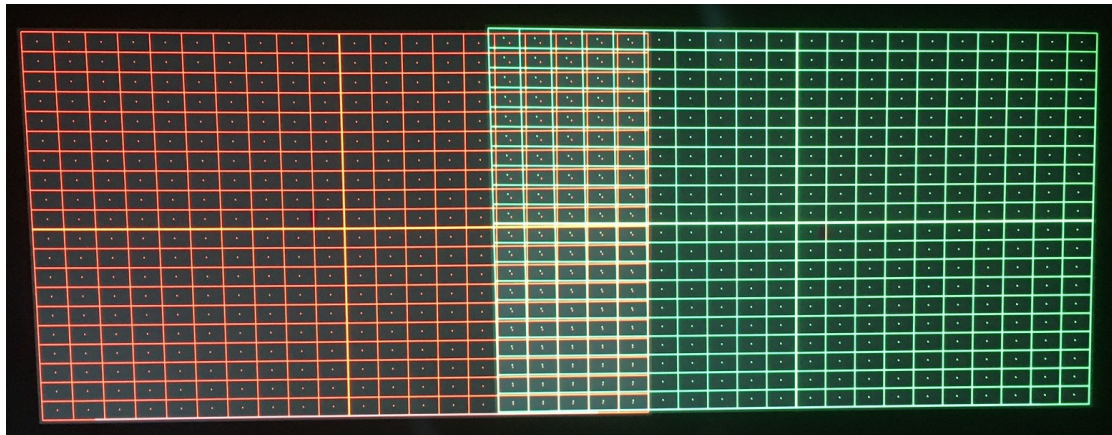
Adjustment procedure:

- ※ Choosing less grid number then increases the grid number step by step, so we usually use 2x2 to setup four corners at first.
- ※ After using more grid number then choose less grid number will lose the early detail settings.
- ※ Adjust the outer cursors as the red ones shown below, and then adjust the inner cursors as the green ones shown below.
- ※ After adjusted inner cursors then adjusted outer cursors will lose the inner cursors settings.
- ※ Using less grid number adjustment is more easier to get homogeneous deformation.

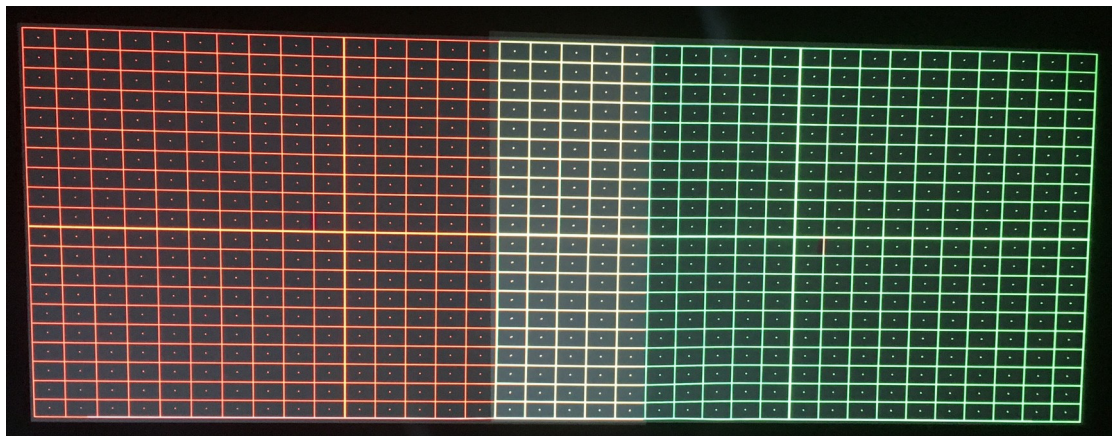


Test Pattern

Use test pattern to speed up the warping process as shown below.



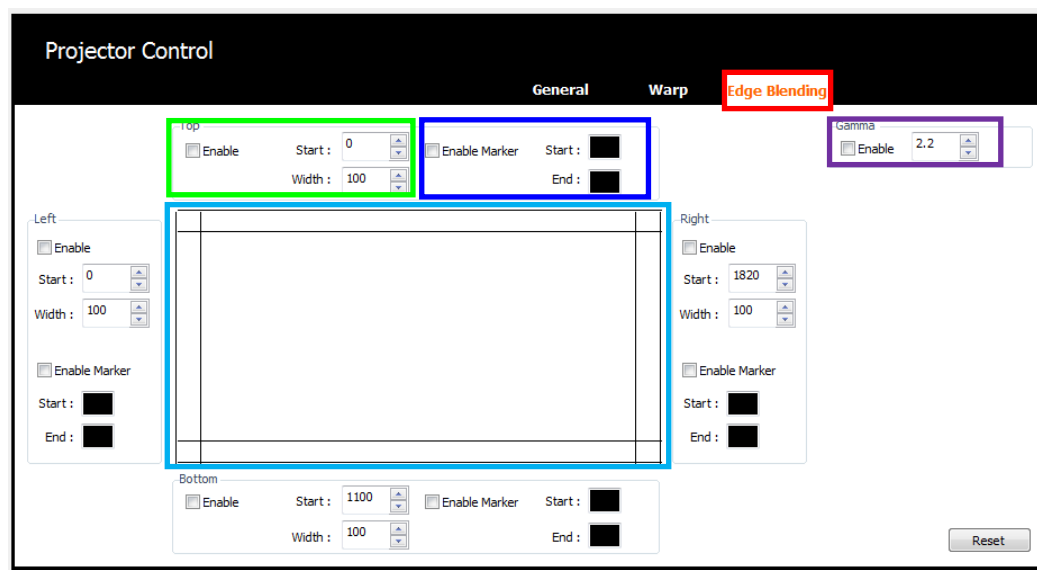
Before adjustment



Adjustment finished

Edge Blending

1. Click on “Edge Blending” as shown below in the red box.
2. Enable the function, set the start position and the corresponding width of the blending area. Press “Enter” to final the setting as shown below in the green box.
3. Enable the function and right click on the black box labeled as “Start”, “End” to change the marker of the blending area as shown below in blue box.
4. Then the blending area is set as shown below in the cyan box.
5. Input the Gamma value indicated in the purple box to control the gamma curve of the blending area.



Adjustment procedure:

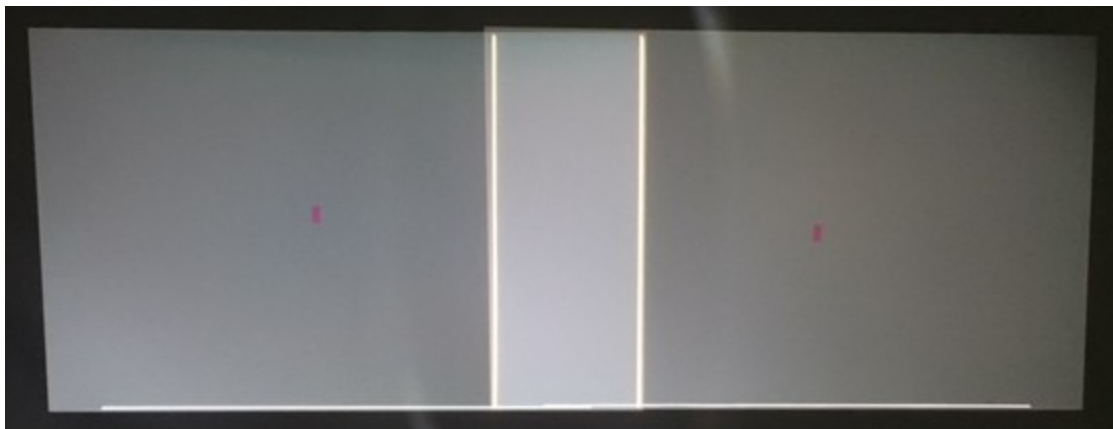
- ✂ Setting the blending width, the start position let the edge blending marker superimposed on each other.
- ✂ Whether the blending area matches another or not also depends on the result of warping adjustment.
- ✂ Setting the same blending gamma value to the blending area of adjacent projectors.

Enable Marker

Set the start position and the corresponding width to speed up the blending process as shown below.



Before adjustment

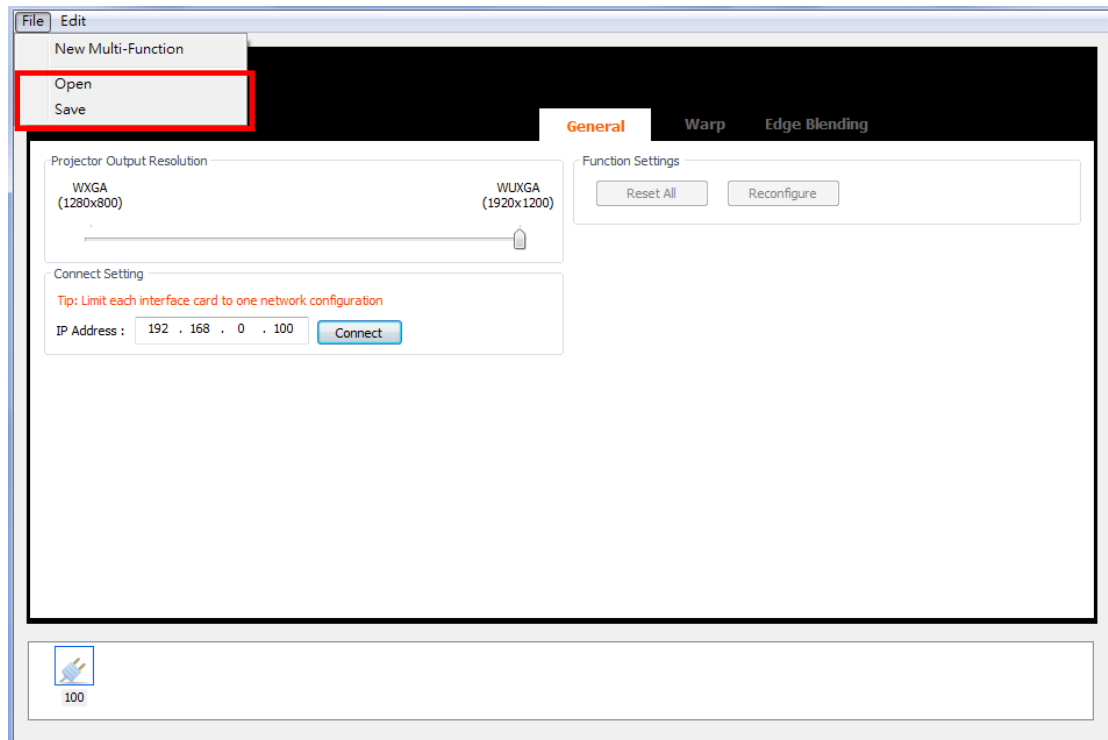


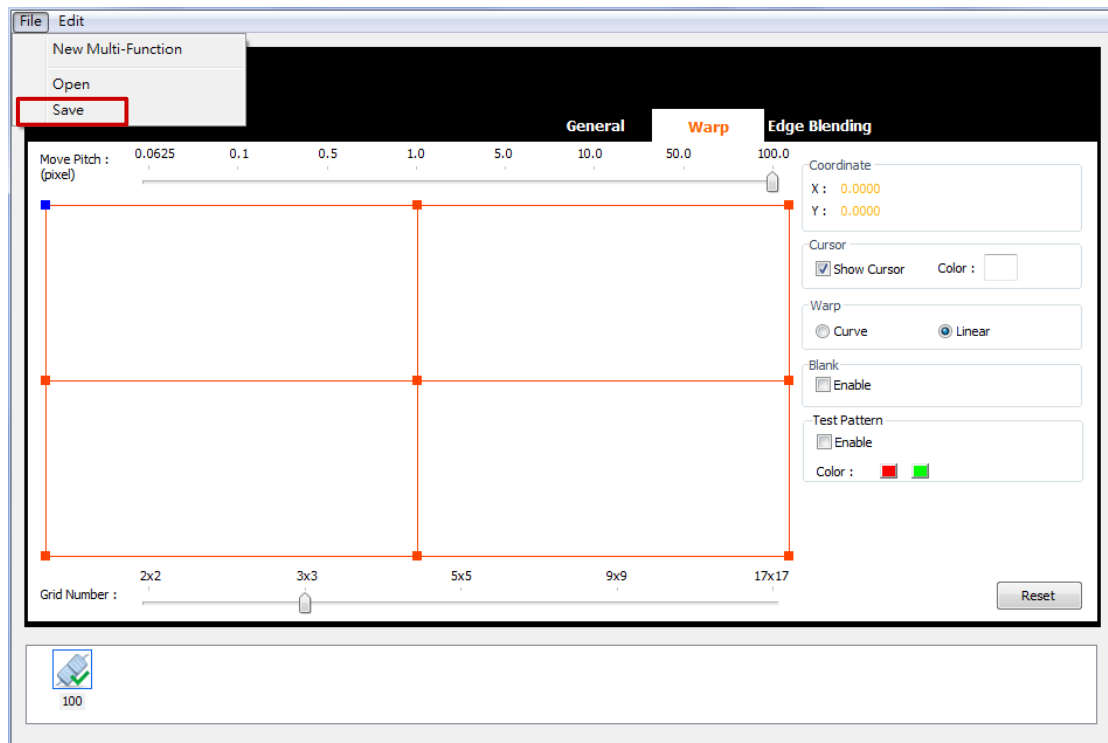
Adjustment finished

Save/Open

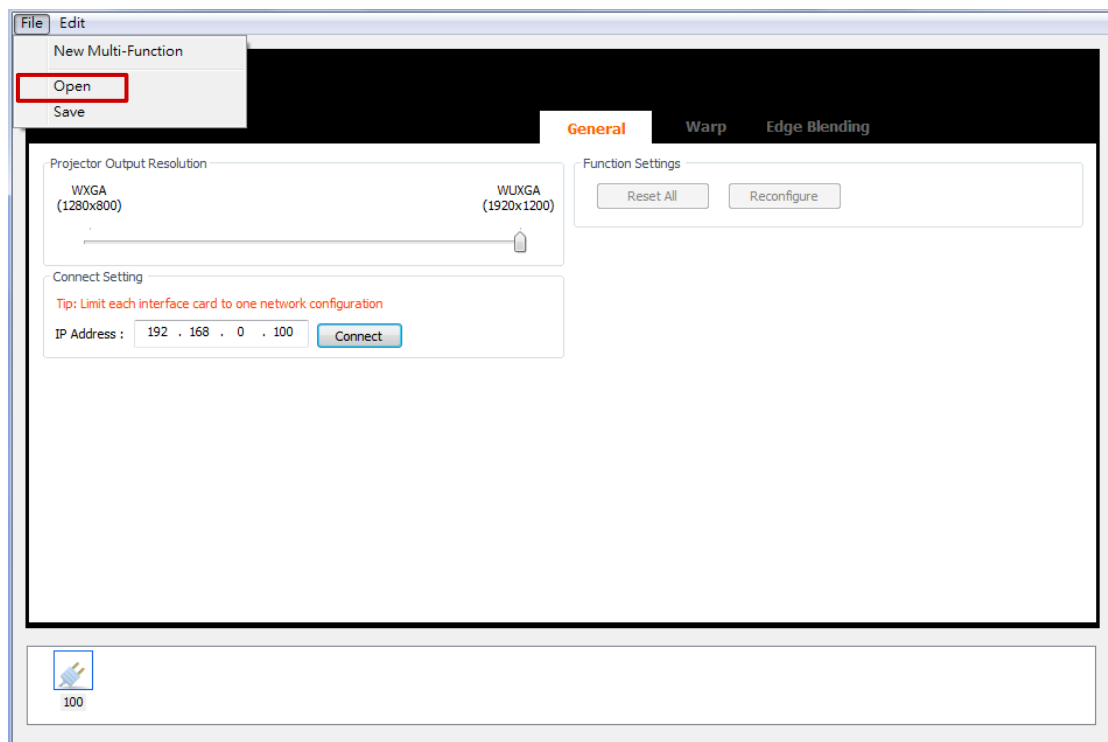
This function makes user able to save the current settings for each projector and open the setting for them after power on next time.

User can enable this function in the menu **【File】** → **【Open】** / **【Save】** .





User can save all the settings after adjustment by clicking on **【Save】** .



User can apply the previous settings by click on **【Open】** .

1. Edit IP address and connect with projector.
2. Click on **【Reconfigure】** to apply the previous settings.